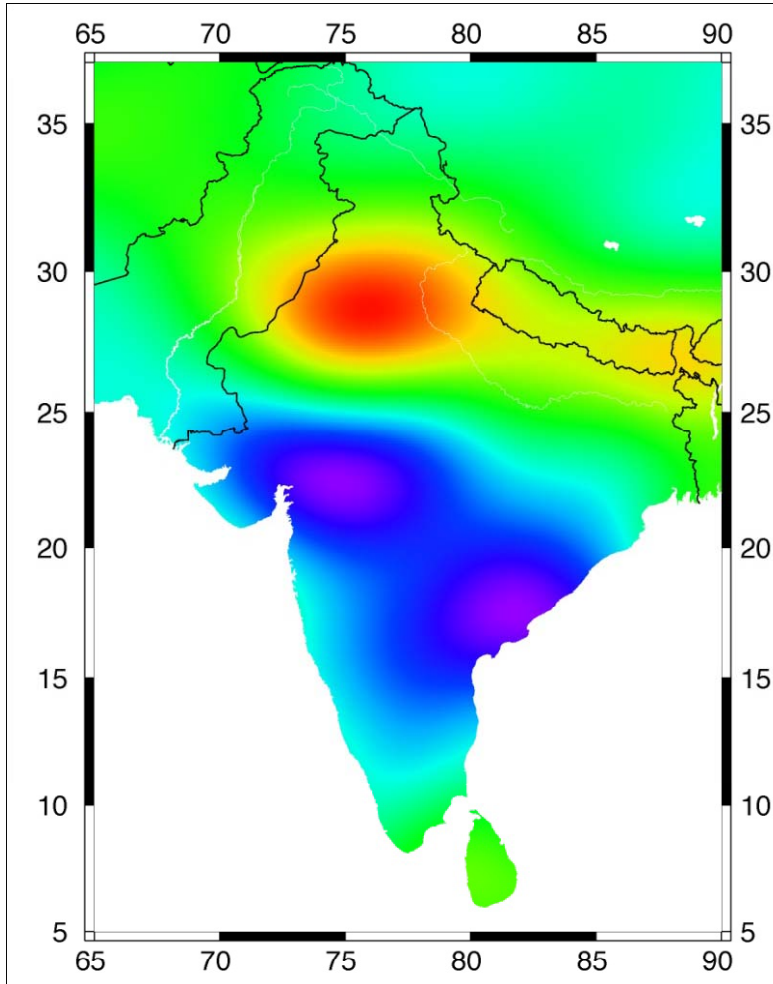




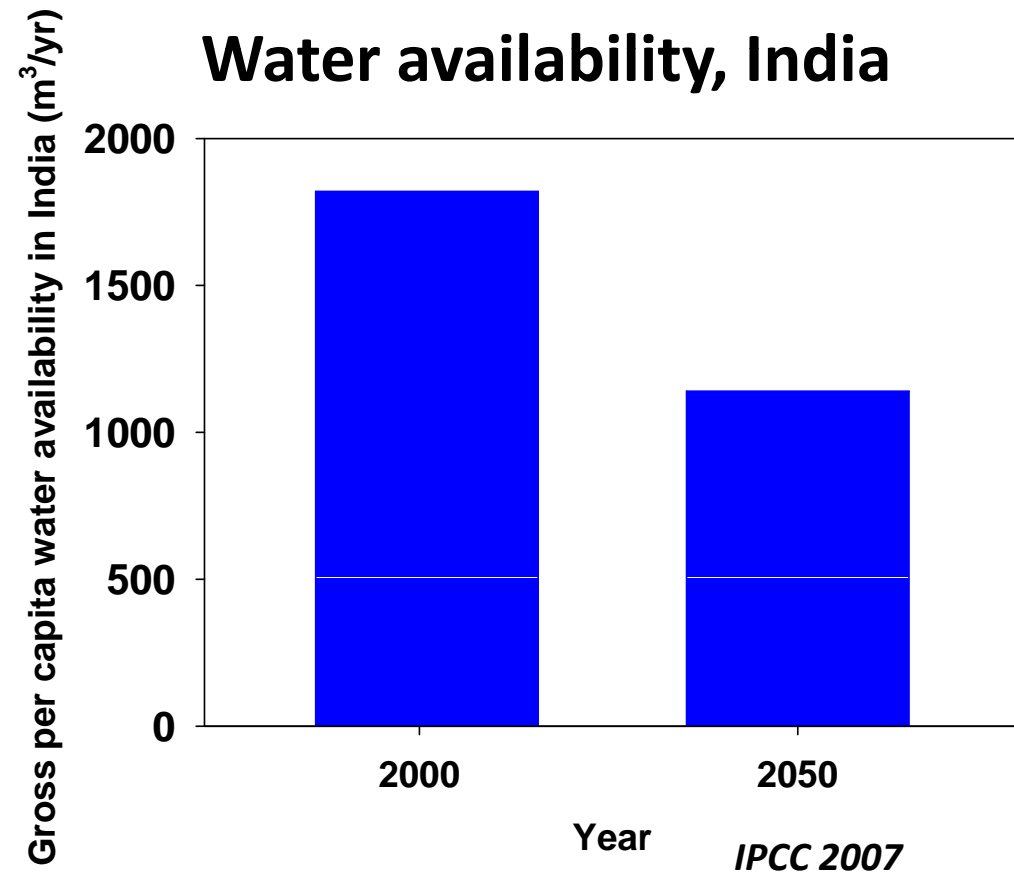
Water

Groundwater changes in India during 2002-08, with **losses in red** and **gains in blue**



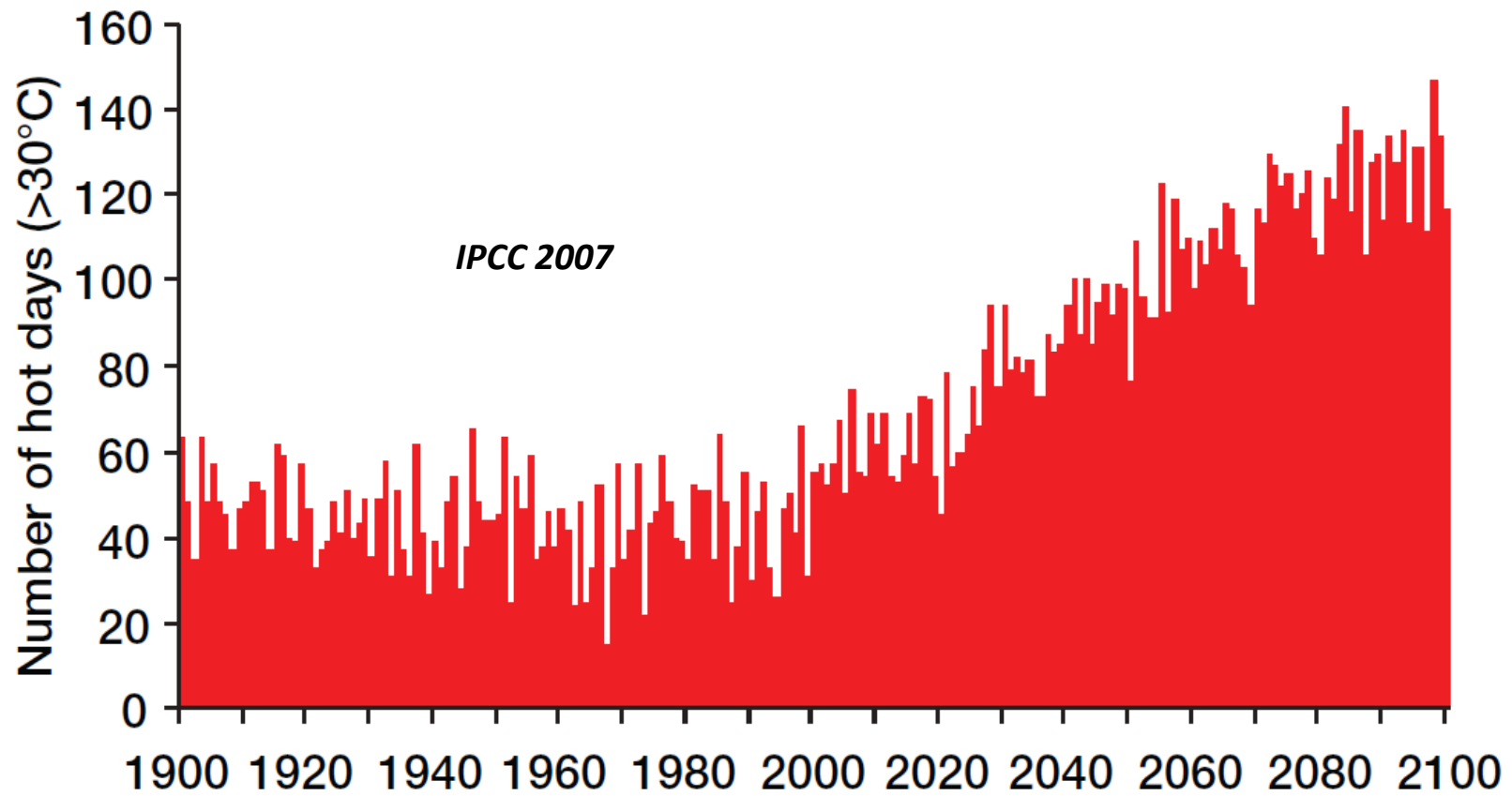
<http://www.nasa.gov>

Water availability, India



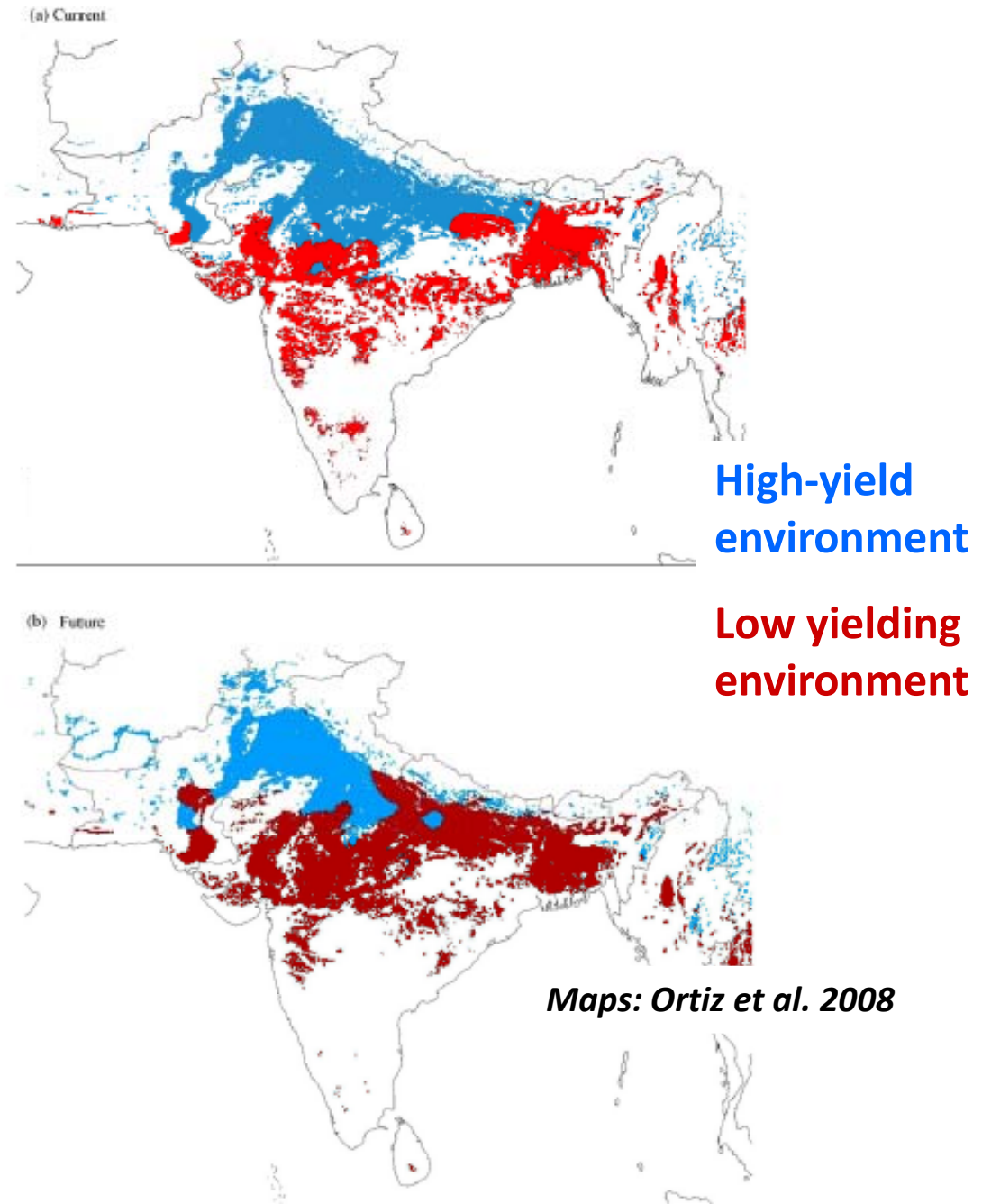
Future temperature range and heat events

Past & future number of heat days, India



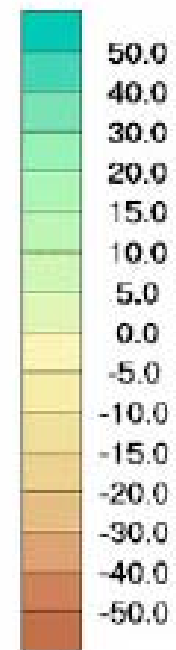
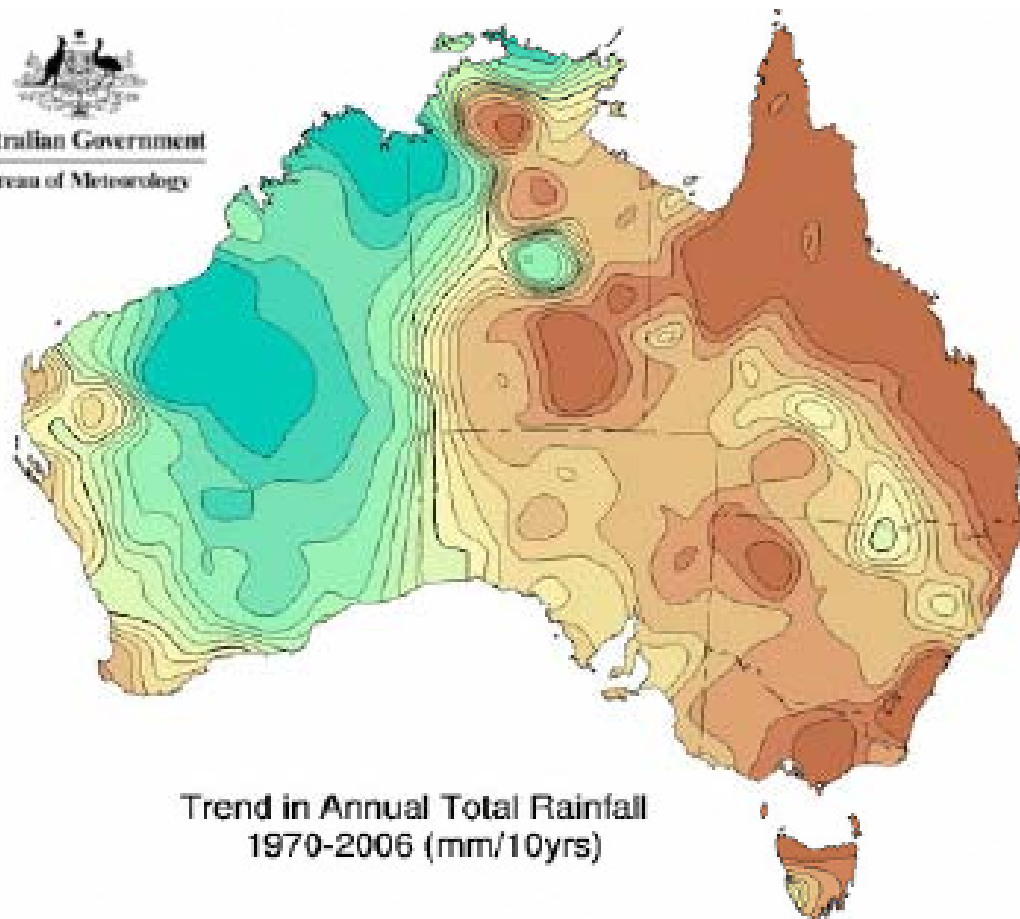
Changes in wheat growing environments

- Substantial loss of high-yielding environment due to increasing temperature
- Projected temperature increases of +2 to +4 °C by 2050 (*IMD, IPCC 2007*)





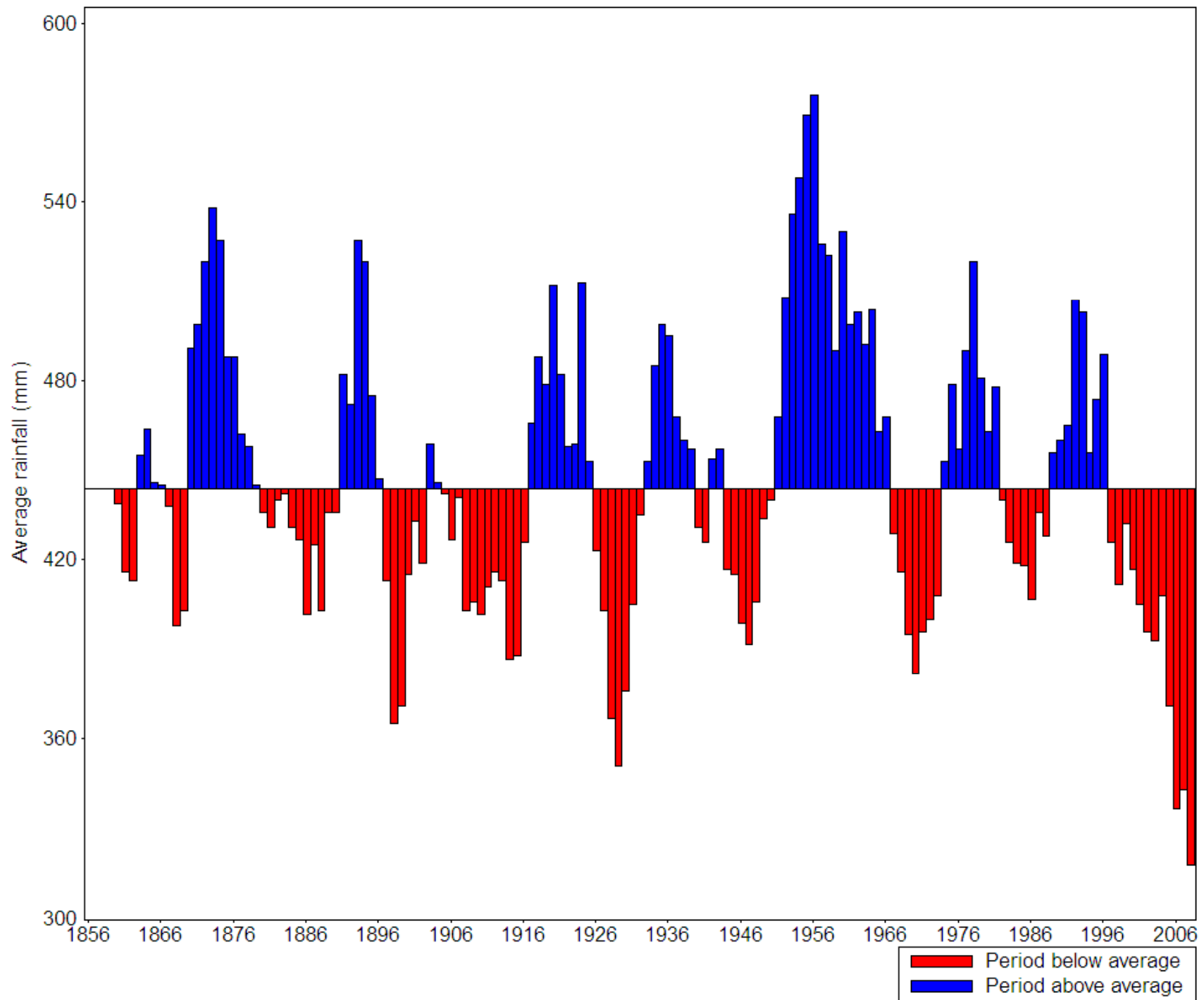
Australian Government
Bureau of Meteorology



Trend in Annual Total Rainfall
1970-2006 (mm/10yrs)

5-year moving average rainfall (8 months, Apr to Nov in year 1) at MELBOURNE REGIONAL OFFICE

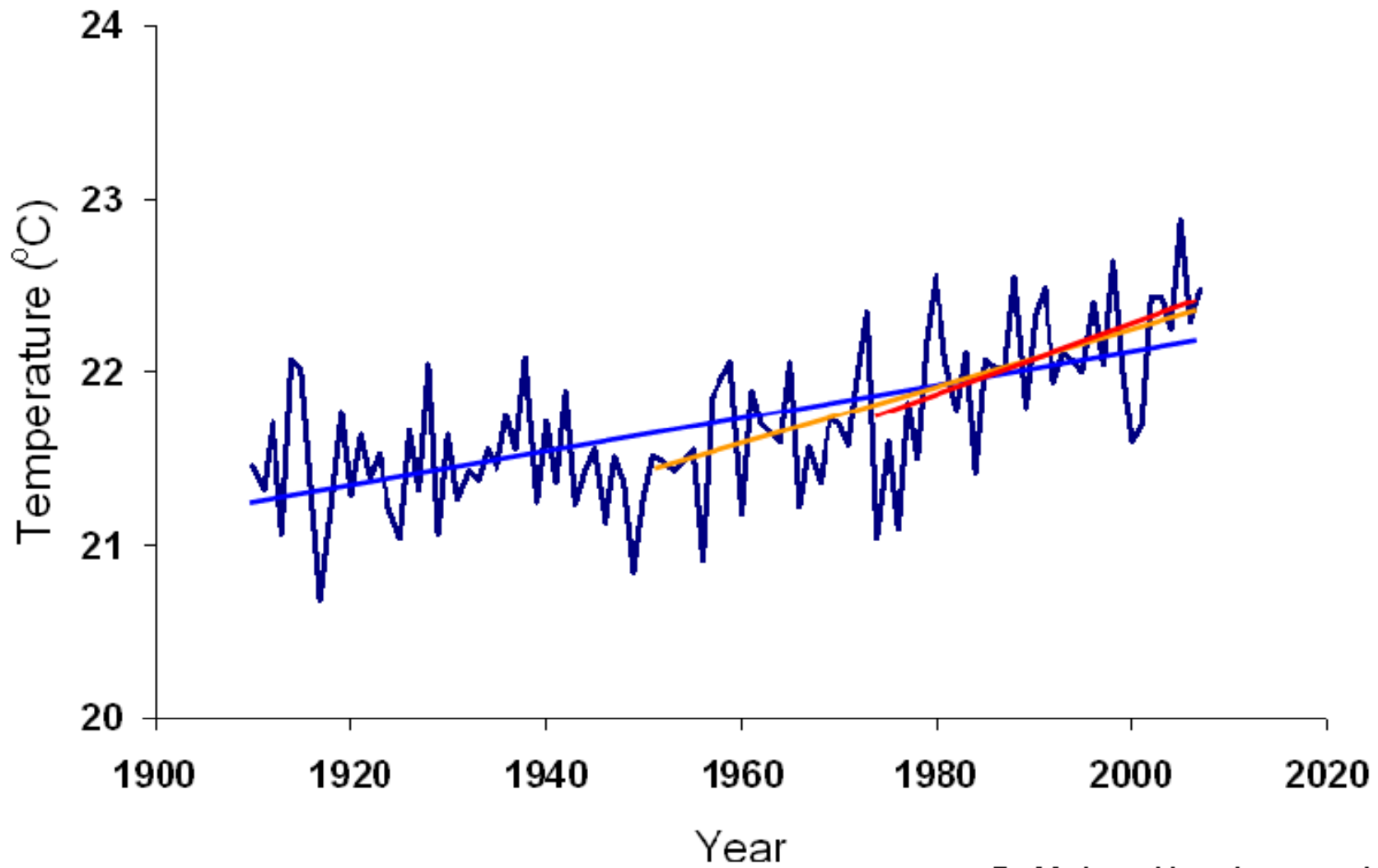
Long-term average rainfall (8 months, Apr to Nov in year 1) is 444 mm



Ending year of 5-year period

Source: Rainman StreamFlow

Australian temperatures



BoM data, Howden unpublished